

Medical Science

To Cite:

Alanazi MM, Alkhamash JM, Alalawi AH. Ultrasound in the diagnosis and therapeutic management in undifferentiated shock patients in the emergency department. *Medical Science* 2024; 28: e143ms3470
doi: <https://doi.org/10.54905/diss.v28i153.e143ms3470>

Authors' Affiliation:

¹Head of Emergency Medicine Research Unit, Emergency Medicine, Emergency Department, First Health Cluster, Riyadh, Saudi Arabia
²Saudi Board Emergency Resident, Emergency Department, Prince Mohammed Bin Abdulaziz Hospital, Second Health Cluster, Riyadh, Saudi Arabia
³Saudi Board Emergency Medicine Resident, First Health Cluster, Riyadh, Saudi Arabia

Corresponding Author

Head of Emergency Medicine Research Unit, Emergency Medicine, Emergency Department, First Health Cluster, Riyadh, Saudi Arabia
Email: moh.alanazi.1@gmail.com

Peer-Review History

Received: 18 August 2024
Reviewed & Revised: 22/August/2024 to 23/November/2024
Accepted: 27 November 2024
Published: 30 November 2024

Peer-review Method

External peer-review was done through double-blind method.

Medical Science
pISSN 2321-7359; eISSN 2321-7367



© The Author(s) 2024. Open Access. This article is licensed under a [Creative Commons Attribution License 4.0 \(CC BY 4.0\)](https://creativecommons.org/licenses/by/4.0/), which permits use, sharing, adaptation, distribution and reproduction in any medium or format, as long as you give appropriate credit to the original author(s) and the source, provide a link to the Creative Commons license, and indicate if changes were made. To view a copy of this license, visit <http://creativecommons.org/licenses/by/4.0/>.

Ultrasound in the diagnosis and therapeutic management in undifferentiated shock patients in the emergency department

Mazi Mohammed Alanazi^{1*}, Johara Mohammed Alkhamash², Ammar Hassan Alalawi³

ABSTRACT

Background: It is advised that circulatory failure be diagnosed and treated as soon as possible. We conducted a thorough analysis to assess POCUS's value in diagnosing shock in adult emergency department patients experiencing circulatory failure. **Method:** PubMed, Cochrane, Embase, and Google Scholar were the electronic databases we examined for publications published between 2018 and 2023. In addition to prospective and retrospective observational studies, we used data from randomized controlled trials reporting the POCUS diagnostic value in patients with shock in the emergency room. **Result:** In this systematic review, 761 patients from 7 papers were included. Research was carried out in Egypt, the United States, India, France, South Africa, and North America. With the exception of one research that was done in a general ward, all of the studies were carried out in emergency rooms. Multi-organ POCUS and TAPSE measurement are included in the ultrasound methodology. Clinical diagnosis, computed tomography angiography, and echocardiography conducted by cardiologists served as reference standards. **Conclusion:** POCUS has demonstrated high sensitivity and favorable likelihood ratio in identifying the etiology of shock, especially obstructive shock, in the studies included in this review.

Keywords: Ultrasound, therapeutic management, emergency department, shock, hypotension

1. INTRODUCTION

Early diagnosis and treatment of circulatory failure are recommended (Vincent and De-Backer, 2013). There are four forms of shock: distributive, cardiogenic, hypovolemic, and obstructive, and each requires a particular course of treatment (Vincent and De-Backer, 2013). Therefore, it's critical to determine the kind of shock the patient is suffering when they have circulatory failure. Clinically, shock

is distinguished from other conditions based on all available data, such as blood tests, medical history and imaging scans. Out of all of these, using an ultrasonography in particular has the ability to precisely define and pinpoint the cause of shock (Marbach et al., 2020; Vieillard et al., 2019).

Moreover, it is occasionally possible for many shocks to overlap, which complicates diagnosis (Vincent and De-Backer, 2013). Ultrasonography, which enables quick and direct image-based pathophysiological monitoring (Díaz-Gómez et al., (2021), may therefore be essential for shock treatment. POCUS is the process for quick bedside identification of the cause of an acute disease using ultrasonography (Díaz-Gómez et al., 2021). It has gained a lot of attention recently (Mayo et al., 2017). Regarding POCUS for shock, several diagnostic procedures have been put forth (Perera et al., 2010). All procedures shared the qualitative evaluation of left and right ventricular size and contractile performance, as well as the physiologic assessment of pericardial fluid and tamponade, in the conventional cardiac view (Perera et al., 2010). Their early goal-directed ultrasonography diagnostic at the bedside was a typical characteristic.

In 2019, a systematic study was published on the diagnostic accuracy of POCUS for shock. The study, however, was restricted to a meta-analysis of just four observational ER studies. Furthermore, to the best of our knowledge, few comprehensive evaluation summarizing the diagnostic accuracy for each form of shock has been documented, despite the fast growth in literature dealing with POCUS in emergency and critical care settings (Mayo et al., 2017). Additionally, while the POCUS procedures for shock have delineated the results and approximate differentiation processes for shock (Stickles et al., (2019), the precise sequence and location of ultrasound testing remain unclear. We carried up a comprehensive evaluation to evaluate the precision of POCUS in the diagnosis of shock in adult patients with circulatory failure in the emergency department.

2. METHOD

This study was conducted according to the Preferred Reporting Items for Systematic reviews and Meta-Analyses (PRISMA) statement (Page et al., 2021). In this study, the index test was defined as POCUS with echocardiography, which was done right away in shock patients to determine the etiology of circulatory failure. Regarding the location of POCUS, there were no limitations. Since there is no particular diagnostic technique for identifying the sock etiology, we used the medical data from each research as the reference standard to describe the clinical diagnosis. We searched electronic databases (PubMed, Cochrane, Embase, and Google scholar) for articles published in the period from 2018 to 2023.

We used keywords (intensive care, emergencies, critical illness, point of care, ultrasound, focus, echocardiography, hypotension, shock, and circulatory failure). We included secondary analyses of data from randomized controlled trials reporting the POCUS diagnostic value for the identification of etiology in adult patients with undifferentiated shock, as well as retrospective and prospective observational studies. This review's release date and language were both unrestricted. The aforementioned criteria were used by two researchers to evaluate each study separately for eligibility. Each abstract that satisfied the first set of requirements for inclusion was assessed as a full-text publication.

The publications that both extractors found fulfilled the eligibility criterion for full text review were included in the final data analysis. Any disagreements were settled by consensus, and where necessary, the relevant author was consulted. Data were independently gathered by four writers from the included papers. After completing their first training, the investigators gathered data and entered it into a pre-made data collecting form. The data collection form targeted; citation, country, sample size, design, number of patients, clinical setting, US protocol, reference standard, circulatory failure definition, US physician, main findings and conclusion.

3. RESULTS AND DISCUSSION

We included 7 articles in this systematic review with a total of 761 patients (Figure 1). Studies were conducted in Egypt, USA, India, France, South Africa and North America. All studies were conducted in emergency department except Zieleskiewicz et al., (2021) study which was conducted in General ward. Ultrasound protocol include, TAPSE measurement, and Multi-organ POCUS. Reference standards were Echocardiography performed by cardiologist, Computed tomography angiography and Clinical diagnosis (Table 1). Main findings of the included studies were presented in (Table 2). While the specific diagnosis of shock varied between the investigations, hypotension was consistently seen. All studies except one used the index test employed POCUS, or multiple-organ ultrasound, which includes echocardiography.

A clinical diagnosis based on medical records was specified as reference standard in nearly all research. In a PE patients, one study had previously suspected illness. Numerous comprehensive analyses have been carried out on the diagnostic precision of POCUS during emergency situations. For respiratory failure POCUS was shown to have a 0.092 sensitivity and 0.98 specificity in a systematic study (Yuan et al., 2021). A 2018 Cochrane systematic review that included 34 trials and more than 8 thousand patients for indicators identification of severe damage in thoraco-abdominal trauma reported 0.74 sensitivity and 0.96 specificity (Stengel et al., 2018). Depending on clinical evaluation, the challenge of determining the shock origin by POCUS may differ. Positive probability ratios and high specificity were observed in a prior systematic study, particularly in the case of obstructive shock (specificity 0.98 and positive likelihood ratio 40.5) (Stickles et al., 2019).

A different narrative analysis that looked at the diagnostic value for acute illnesses similarly revealed that pneumothorax, pericardial effusion, and right heart failure had exceptionally high specificity (Ding et al., 2011). Rahulkumar et al., (2019) study claims that the preliminary impression obtained from POCUS upon admission was equivalent to the medical diagnosis made during the hospital stay. In their investigation, the sensitivity for diagnosing obstructive and cardiogenic shock was good, while the sensitivity for the distributive group was poor. This could be because septic shock is dynamic and can present with a variety of complicated POCUS results (Ghane et al., 2015). In certain situations, repeated POCUS may be helpful in diagnosing septic shock. When many underlying mechanisms for shock are present, POCUS sensitivity is reduced once again.

According to a study by Ramadan et al., (2023), not all ultrasonography and echocardiography markers were useful for identifying distinct forms of shock. Aortic VTI and maximum IVC diameter were important distributive shock discriminators. Certain forms of shock were strongly associated with other measures, such as impaired left ventricular function in cardiogenic and mixed distributive cardiogenic shock, and pneumonia in distributive or mixed shock types. The POCUS group of patients had greater survival rates, a larger proportion of sufficient immediate diagnosis, and faster treatment than the traditionally treated group, according to the Zieleskiewicz et al., (2021) study. Landmark research that included 260 patients hospitalized to the intensive care unit due to severe respiratory failure demonstrated the potential diagnostic use of lung ultrasonography (Lichtenstein and Mezière, 2008).

Since then, it has been consistently demonstrated that POCUS is more effective than a chest X-ray with physical examination alone for diagnosing patients with acute respiratory failure (Pivetta et al., 2015; Silva et al., 2013). FOCUS is more sensitive for PE in patient groups with aberrant vital signs who are suspected of having PE, especially in those with an HR more than 110 beats/min, according to a research by Daley et al., (2019) For ED patients with aberrant vital signs, a quick bedside test that could reliably rule out PE or dramatically reduce its chance at the time the history and physical examination are completed might be very helpful.

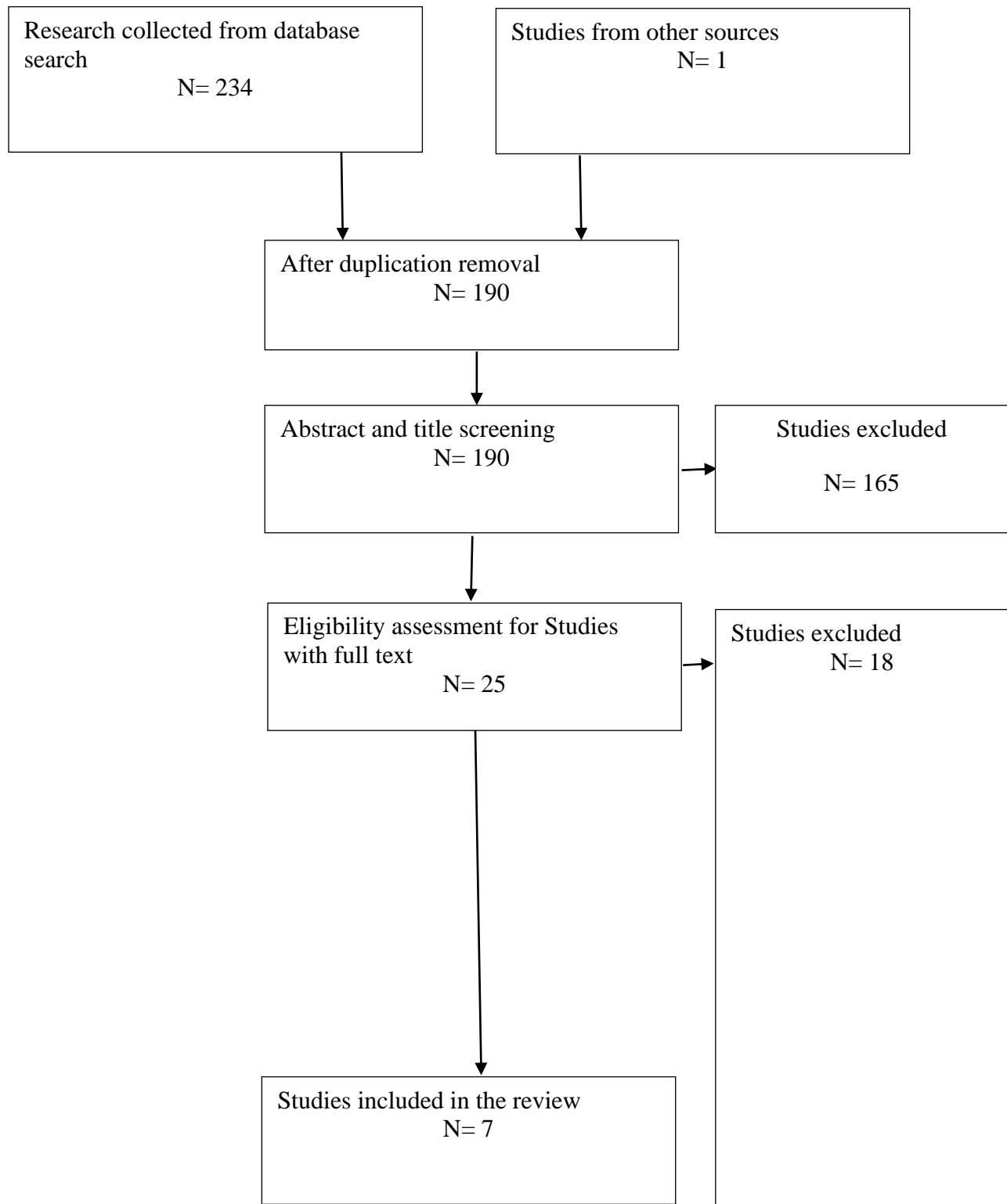


Figure 1 PRISMA consort chart of studies selection

Table 1 Characteristics of the include studies

Citation	Country	Sample size	Design, no. Of patients (location)	Clinical setting	US protocol	Reference standard	Definition of circulatory failure	US physician
(Ramadan et al., 2023)	Egypt	140	Cross sectional study	Emergency department	POCUS	Echocardiography performed by cardiologist	SBP less than 90 mmHg or a shock index of at least one, together with symptoms of tissue hypoperfusion such as changed mental status, reduced urine output, delayed capillary refill time, mottled skin, or increased lactate levels	Emergency physicians
(Daley et al., 2019)	USA	136	Prospective Cohort	Emergency department	TAPSE measurement	Computed tomography angiography	Hypotension or Tachycardia with suspected PE	Emergency physicians or trained medical students
(Rahul kumar et al., 2019)	India	97	Prospective Cohort	Emergency department	Multi-organ POCUS	Clinical diagnosis	shock index more than 1.0 and SBP less than 90 mmHg	Emergency physician
(Patil et al., 2020)	India	100	Prospective Cohort	Emergency department	Multi-organ POCUS	Clinical diagnosis after admission	Shock index more than 1.0 and SBP less than 90 mmHg	Emergency physician
(Keefe et al., 2021)	South Africa and North America	135	Prospective Cohort, six centers	Emergency department	Multi-organ POCUS	Clinical diagnosis by two clinicians	shock index more than 1 or SBP less than 100 mmHg	Emergency physicians trained to POCUS
(Zielekiewicz et al., 2021)	France	83	Prospective Cohort	General ward	Multi-organ POCUS	Clinical diagnosis	MAP < 65 mmHg or HR < 40 bpm or HR > 120 bpm or UO < 50 ml/4 h	ICU physicians

(Elbaih et al., 2018)	Egypt	100	Prospective Cohort	Emergency department	Multi-organ POCUS	Clinical diagnosis	Unstable polytrauma patients	Unclear
-----------------------	-------	-----	--------------------	----------------------	-------------------	--------------------	------------------------------	---------

Table 2 Main findings of studies included

Citation	Main findings
(Rahulkumar et al., 2019)	It took the point-of-care ultrasound 12 minutes on average to examine. It had a 0.860 Kappa index. This study emphasizes the use of POCUS in emergency medicine departments for the early detection of shock etiology. Point-of-care ultrasound diagnostic substantially agreed with medical diagnosis. With the exception of distributive shock, point-of-care ultrasonography demonstrated good effectiveness in accurately differentiating the shock etiology.
(Daley et al., 2019)	FOCUS demonstrated 64% specificity and 92% sensitivity for PE in all individuals. FOCUS was 100% sensitive and 63% specific for PE in the subgroup of 98 patients whose heart rates were greater than or equivalent to 110 beats per minute. For FOCUS, there was a good deal of interobserver agreement.
(Elbaih et al., 2018)	According to RUSH, hypovolemic shock is the most common diagnostic cause of instability in polytrauma patients, followed by distributive, obstructive, and cardiogenic shock, in that order. When it came to diagnosing unstable polytrauma patients, RUSH had a 94.2% sensitivity rate and a 95.2% accuracy rate when it came to shock patients.
(Keefer et al., 2021)	For identifying cardiogenic shock, the presence of LVD on FOCUS exhibited a sensitivity of 62.5%, specificity of 94.1%, positive likelihood ratio of 11.6, negative likelihood ratio of 0.40, and accuracy of 90.3%. When evaluating otherwise undifferentiated hypotensive adult patients in the emergency room, the early detection of cardiogenic shock may be aided by the detection of left ventricular failure on FOCUS.
(Ramadan et al., 2023)	With an AUC of 0.888 and 0.772, respectively, the velocity time integral of the aorta and the IVC maximal diameter were effective discriminators for distributive shock. The ability to distinguish between distinct forms of shock was greatly aided by factors such as pneumonia, valve vegetations, pneumothorax, and left ventricular systolic function.
(Patil et al., 2020)	POCUS alone was shown to be accurate in 47% of patients and clinical assessment alone in 45% of patients, respectively, for diagnosis. However, the accuracy rose to 89% when the results of the clinical examination were combined with PoCUS. Distributive shock, which affects 38% of patients, was shown to be the most prevalent cause of shock, with sepsis being the most common subtype. Cohen's kappa coefficient = 1 was in full agreement with the combined clinical evaluation of patients with obstructive shock, whereas Cohen's kappa coefficient = 0.717 was in considerable agreement with patients with distributive shock. The combined evaluation's total kappa correlation with PoCUS was 0.89, indicating nearly complete agreement with the final diagnosis.
(Zieleskiewicz et al., 2021)	The percentage of appropriate diagnoses, the time to start therapy, and maybe even the survival rate of ward patients experiencing acute respiratory or circulatory failure may all be improved by the systematic use of a portable POCUS equipment at the patient's bedside.

4. CONCLUSION

High sensitivity and a favorable likelihood ratio were observed in studies included in this review when using POCUS to identify the shock etiology, particularly obstructive shock. Therefore, these results have to be taken into account in further POCUS-based shock diagnosis procedures.

Ethical approval

Not applicable

Informed consent

Not applicable.

Funding

This study has not received any external funding.

Conflict of interest

The authors declare that there is no conflict of interests.

Data and materials availability

All data sets collected during this study are available upon reasonable request from the corresponding author.

REFERENCES

- Daley JJ, Dwyer KH, Grunwald Z, Shaw DL, Stone MB, Schick A, Vrablik M, Kennedy Hall M, Hall J, Liteplo AS, Haney RM, Hun N, Liu R, Moore CL. Increased Sensitivity of Focused Cardiac Ultrasound for Pulmonary Embolism in Emergency Department Patients with Abnormal Vital Signs. *Acad Emerg Med* 2019; 26(11):1211-1220. doi: 10.1111/acem.13774
- Díaz-Gómez JL, Mayo PH, Koenig SJ. Point-of-Care Ultrasonography. *N Engl J Med* 2021; 385(17):1593-1602. doi: 10.1056/NEJMra1916062
- Ding W, Shen Y, Yang J, He X, Zhang M. Diagnosis of pneumothorax by radiography and ultrasonography: a meta-analysis. *Chest* 2011; 140(4):859-866. doi: 10.1378/chest.10-2946
- Elbaih AH, Housseini AM, Khalifa MEM. Accuracy and outcome of rapid ultrasound in shock and hypotension (RUSH) in Egyptian polytrauma patients. *Chin J Traumatol* 2018; 21(3):156-162. doi: 10.1016/j.cjtee.2017.06.009
- Ghane MR, Gharib MH, Ebrahimi A, Samimi K, Rezaee M, Rasouli HR, Kazemi HM. Accuracy of Rapid Ultrasound in Shock (RUSH) Exam for Diagnosis of Shock in Critically Ill Patients. *Trauma Mon* 2015; 20(1):e20095. doi: 10.5812/trauma.mon.20095
- Keefer S, Atkinson P, Chandra K, Henneberry RJ, Olszynski PA, Peach M, Diegelmann L, Lamprecht H, Stander M, Lussier D, Pham C, Milne J, Fraser J, Lewis D. Sonographic Findings of Left Ventricular Dysfunction to Predict Shock Type in Undifferentiated Hypotensive Patients: An Analysis from the Sonography in Hypotension and Cardiac Arrest in the Emergency Department (SHoC-ED) Study. *Cureus* 2021; 13(7):e16360. doi: 10.7759/cureus.16360
- Lichtenstein DA, Mezière GA. Relevance of lung ultrasound in the diagnosis of acute respiratory failure: the BLUE protocol. *Chest* 2008; 134(1):117-25. doi: 10.1378/chest.07-2800
- Marbach JA, Almufleh A, Di-Santo P, Simard T, Jung R, Diemer G, West FM, Millington SJ, Mathew R, Le-May MR, Hibbert B. A Shifting Paradigm: The Role of Focused Cardiac Ultrasound in Bedside Patient Assessment. *Chest* 2020; 158(5):2107-2118. doi: 10.1016/j.chest.2020.07.021
- Mayo P, Arntfield R, Balik M, Kory P, Mathis G, Schmidt G, Slama M, Volpicelli G, Xirouchaki N, McLean A, Vieillard-Baron A. The ICM research agenda on critical care ultrasonography. *Intensive Care Med* 2017; 43(9):1257-1269. doi: 10.1007/s00134-017-4734-z
- Page MJ, McKenzie JE, Bossuyt PM, Boutron I, Hoffmann TC, Mulrow CD, Shamseer L, Tetzlaff JM, Akl EA, Brennan SE, Chou R, Glanville J, Grimshaw JM, Hróbjartsson A, Lalu MM, Li T, Loder EW, Mayo-Wilson E, McDonald S, McGuinness LA, Stewart LA, Thomas J, Tricco AC, Welch VA, Whiting P, Moher D. The PRISMA 2020 statement: an updated guideline for reporting systematic reviews. *BMJ* 2021; 372:n71. doi: 10.1136/bmj.n71

11. Patil A, Madhu S, Rameshbabu HJ, Arpitha L, Ganesha BS, Nisarg S, Adarsh SB, Sriharsha J, Sagarika B. Reliability of Emergency Department Diagnosis in Identifying the Etiology of Nontraumatic Undifferentiated Hypotension. *IJCCM* 2020; 24(5):313–20. doi: 10.5005/jp-journals-10071-23429
12. Perera P, Mailhot T, Riley D, Mandavia D. The RUSH exam: Rapid Ultrasound in SHock in the evaluation of the critically ill. *Emerg Med Clin North Am* 2010; 28(1):29-56, vii. doi: 10.1016/j.emc.2009.09.010
13. Pivetta E, Goffi A, Lupia E, Tizzani M, Porrino G, Ferreri E, Volpicelli G, Balzaretto P, Banderali A, Iacobucci A, Locatelli S, Casoli G, Stone MB, Maule MM, Baldi I, Merletti F, Cibinel GA, Baron P, Battista S, Buonafede G, Busso V, Conterno A, Del Rizzo P, Ferrera P, Pecetto PF, Moiraghi C, Morello F, Steri F, Ciccone G, Calasso C, Caserta MA, Civita M, Condo' C, D'Alessandro V, Del-Colle S, Ferrero S, Griot G, Laurita E, Lazzerro A, Lo Curto F, Michelazzo M, Nicosia V, Palmari N, Ricchiardi A, Rolfo A, Rostagno R, Bar F, Boero E, Frascisco M, Micossi I, Mussa A, Stefanone V, Agricola R, Cordero G, Corradi F, Runzo C, Soragna A, Sciuillo D, Vercillo D, Allione A, Artana N, Corsini F, Dutto L, Lauria G, Morgillo T, Tartaglino B, Bergandi D, Cassetta I, Masera C, Garrone M, Ghiselli G, Ausiello L, Barutta L, Bernardi E, Bono A, Forno D, Lamorte A, Lison D, Lorenzati B, Maggio E, Masi I, Maggiorotto M, Novelli G, Panero F, Perotto M, Ravazzoli M, Saglio E, Soardo F, Tizzani A, Tizzani P, Tullio M, Ulla M, Romagnoli E; SIMEU Group for Lung Ultrasound in the Emergency Department in Piedmont. Lung Ultrasound-Implemented Diagnosis of Acute Decompensated Heart Failure in the ED: A SIMEU Multicenter Study. *Chest* 2015; 148(1):202-210. doi: 10.1378/chest.14-2608
14. Rahulkumar HH, Bhavin PR, Shreyas KP, Krunalkumar HP, Atulkumar S, Bansari C. Utility of Point-of-Care Ultrasound in Differentiating Causes of Shock in Resource-Limited Setup. *J Emerg Trauma Shock* 2019; 12(1):10-17. doi: 10.4103/JETS.JET_S_61_18
15. Ramadan A, Tamer A, Hassan A, Ahmed M, Assem AR. Evaluation of Parameters Used in Echocardiography and Ultrasound Protocol for the Diagnosis of Shock Etiology in Emergency Setting. *BMC* 2023; 23(1):132. doi: 10.1186/s12873-023-00902-x
16. Silva S, Biendel C, Ruiz J, Olivier M, Bataille B, Geeraerts T, Mari A, Riu B, Fourcade O, Genestal M. Usefulness of cardiothoracic chest ultrasound in the management of acute respiratory failure in critical care practice. *Chest* 2013; 144(3): 859-865. doi: 10.1378/chest.13-0167
17. Stengel D, Leisterer J, Ferrada P, Ekkernkamp A, Mutze S, Hoening A. Point-of-care ultrasonography for diagnosing thoracoabdominal injuries in patients with blunt trauma. *Cochrane Database Syst Rev* 2018; 12(12):CD012669. doi: 10.1002/14651858.CD012669.pub2
18. Stickles SP, Carpenter CR, Gekle R, Kraus CK, Scoville C, Theodoro D, Tran VH, Ubiñas G, Raio C. The diagnostic accuracy of a point-of-care ultrasound protocol for shock etiology: A systematic review and meta-analysis. *CJEM* 2019; 21(3):406-417. doi: 10.1017/cem.2018.498
19. Vieillard BA, Millington SJ, Sanfilippo F, Chew M, Diaz-Gomez J, McLean A, Pinsky MR, Pulido J, Mayo P, Fletcher N. A decade of progress in critical care echocardiography: a narrative review. *Intensive Care Med* 2019; 45(6):770-788. doi: 10.1007/s00134-019-05604-2. Erratum in: *Intensive Care Med* 2019; 45(6):911. doi: 10.1007/s00134-019-05616-y
20. Vincent JL, De-Backer D. Circulatory shock. *N Engl J Med* 2013; 369(18):1726-34. doi: 10.1056/NEJMra1208943
21. Yuan X, Liu L, Chang W, Wu Z, Huang L, Chao Y, Lu X, Xie J, Yang Y, Qiu H. Diagnosis Accuracy of Lung Ultrasound for ARF in Critically Ill Patients: A Systematic Review and Meta-Analysis. *Front Med (Lausanne)* 2021; 8:705960. doi: 10.3389/fmed.2021.705960
22. Zieleskiewicz L, Lopez A, Hraiech S, Baumstarck K, Pastene B, Di-Bisceglie M, Coiffard B, Duclos G, Boussuges A, Bobbia X, Einav S, Papazian L, Leone M. Bedside POCUS during ward emergencies is associated with improved diagnosis and outcome: an observational, prospective, controlled study. *Crit Care* 2021; 25(1):34. doi: 10.1186/s13054-021-03466-z